

USA VOTERS AND IMMIGRATION POLICY

MAY 2020



MOORE INFORMATION GROUP
RESEARCH • ANALYSIS • RESULTS

METHODOLOGY



SAMPLE

1,188 live interviews among a representative sample of likely voters in the United States of America.



METHOD

Online interviews conducted May 5th, 2020.



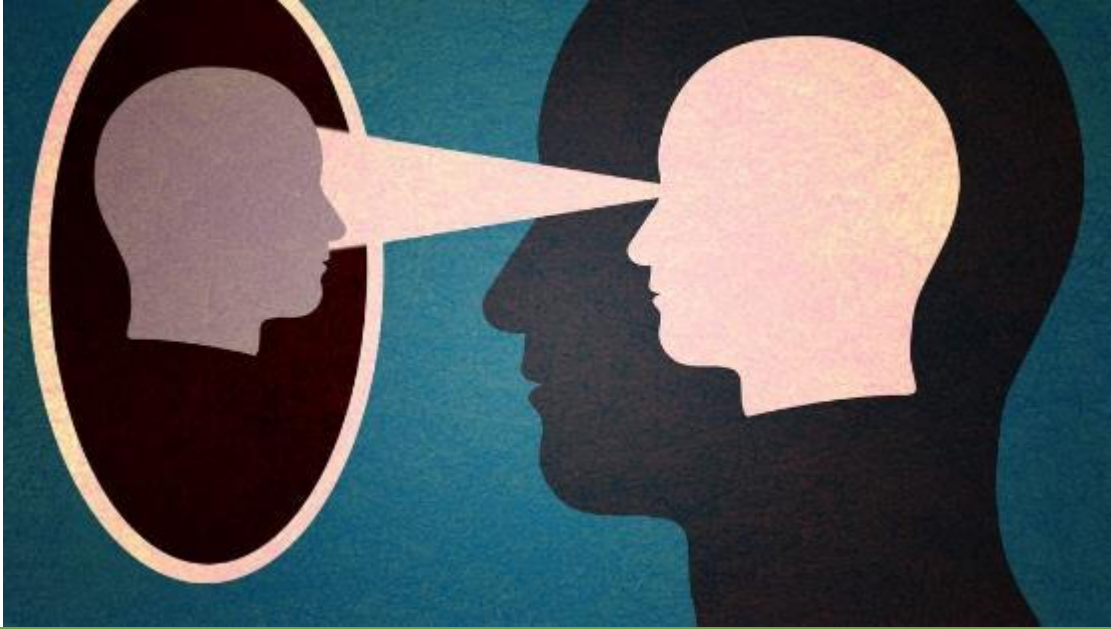
DEMOGRAPHY

Region		Gender		Age	
West	22%	Men	48%	18-29	12%
Midwest	23%	Women	52%	30-39	14%
South	32%			40-49	15%
Northeast	23%			50-69	38%
				70+	20%

Party ID		Education		Income	
Republicans	32%	0-12 years	17%	Less than \$30K	19%
Democrats	37%	13-15 years	30%	\$30K-\$49K	20%
Independents/others	31%	16 years	29%	\$50K-\$99K	37%
		17+ years	23%	\$100K or more	22%

Ethnicity		Political Philosophy	
Caucasians	70%	Very Conservatives	16%
African Americans	12%	Somewhat Conservatives	16%
Latinos	12%	Total Conservatives	31%
Others	6%	Moderates	38%
		Liberals	29%



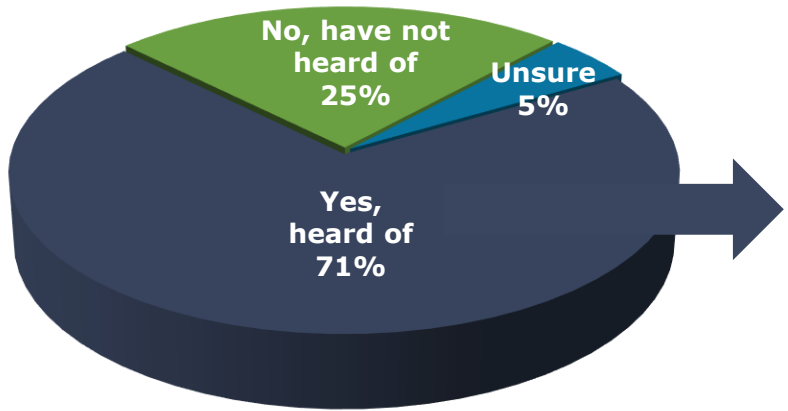


AWARENESS AND PERCEPTIONS OF DACA

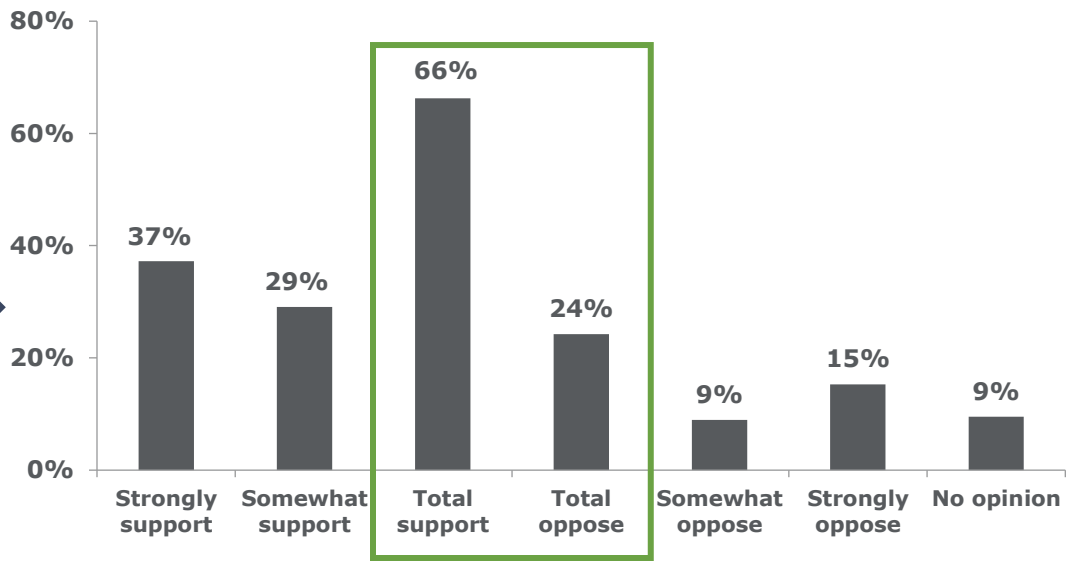


AWARENESS OF DACA

“Have you ever heard of DACA, the Deferred Action for Childhood Arrivals, sometimes called ‘protections for Dreamers?’ ” (Q2)



IF Q2=YES: “Based on what you know or have heard, do you strongly support, somewhat support, somewhat oppose or strongly oppose the DACA program?” (Q2.1, N=840)



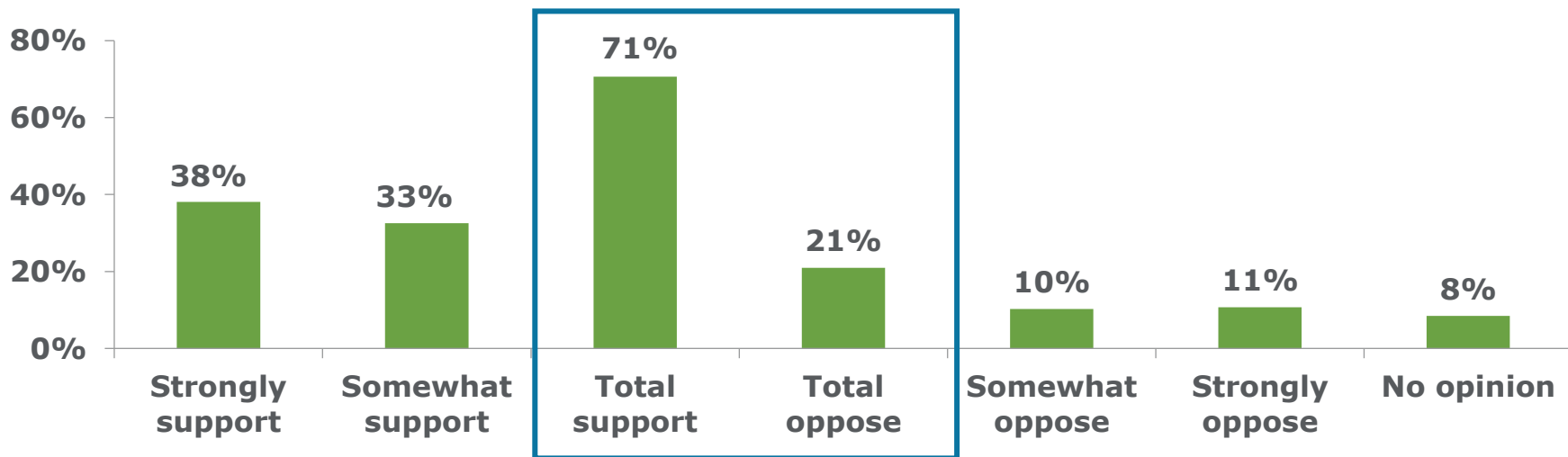
Party ID	Support	Oppose	Net support	No opinion
Republicans	46%	47%	-1%	7%
Democrats	91%	4%	+87%	4%
Inds./others	55%	26%	+29%	19%



INFORMED SUPPORT FOR DACA

"The Deferred Action for Childhood Arrivals, or DACA, is a federal immigration policy that allows immigrants who came to the United States as children and previously did not have legal status, to remain living and working in the U.S. legally, assuming they can pass a background check with the Department of Homeland Security.

Based on this, do you strongly support, somewhat support, somewhat oppose or strongly oppose the DACA program?" (Q3)



Party ID	Support	Oppose	Net support	No opinion
Republicans	55%	39%	+16%	6%
Democrats	90%	5%	+85%	5%
Inds./others	63%	22%	+41%	16%



PROFILE OF MOVERS TO SUPPORT DACA

5% of voters (N=65) moved to support DACA when fully informed.
These voters are:



GENDER

- Men 51%
- Women 49%



AGE

- 18-29 9%
- 30-39 19%
- 40-49 11%
- 50-69 38%
- 70+ 23%



EDUCATION

- 0-12 years 21%
- 13-15 years 34%
- 16 years 29%
- 17+ years 15%



PARTY ID

- Republicans 40%
- Democrats 19%
- Inds./others 40%



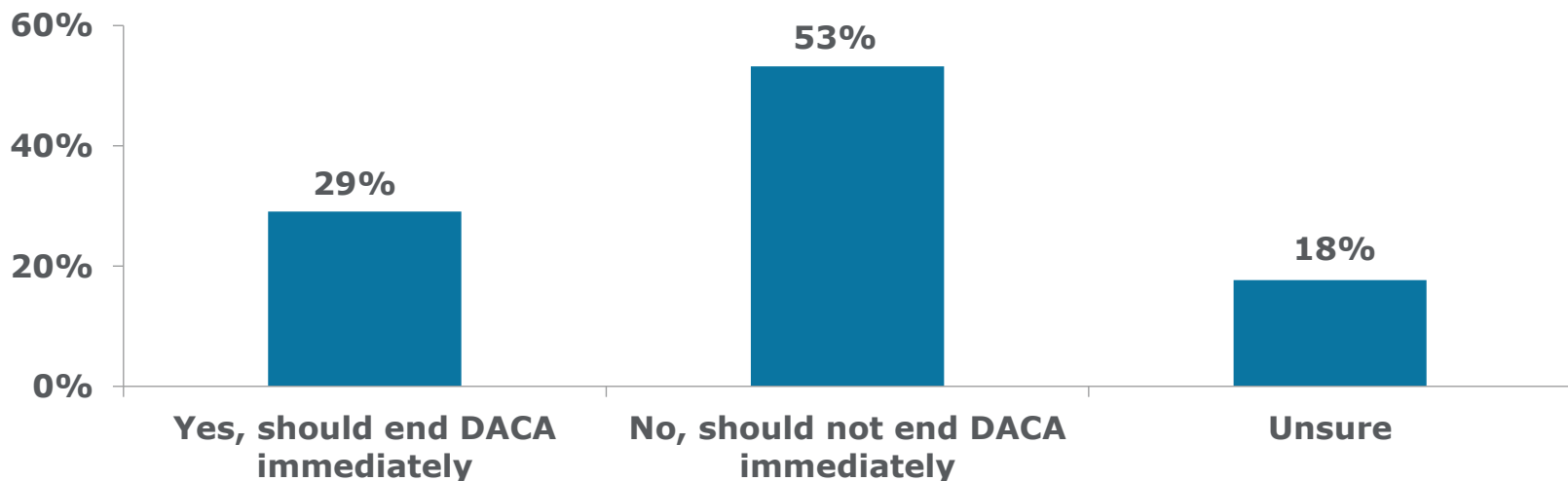


ENDING DACA



MAJORITY OPPOSE ENDING DACA IMMEDIATELY

“As you may know, President Trump has proposed ending the DACA program. The issue is now being considered by the United States Supreme Court, which is likely to issue a ruling soon as to whether DACA can be ended or not. In your opinion, if the Supreme Court permits the President to end the program, should he do so immediately?” (Q4)



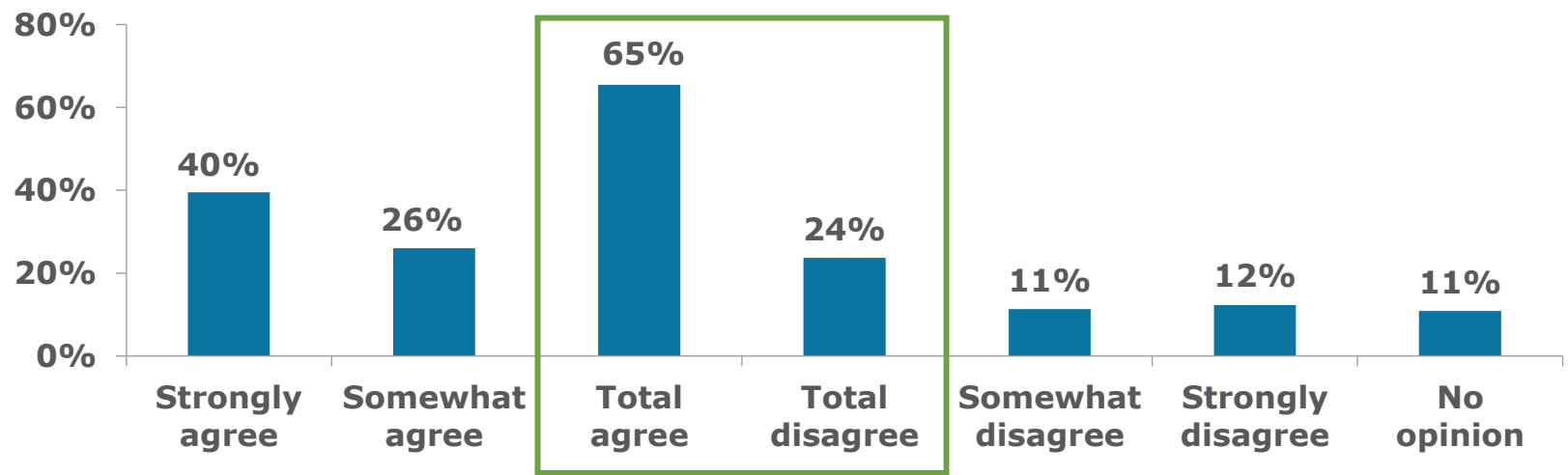
<i>Party ID</i>	<i>Yes, should</i>	<i>No, should not</i>	<i>Net yes, should</i>	<i>Unsure</i>
Republicans	52%	27%	+25%	21%
Democrats	13%	77%	-64%	10%
Inds./others	25%	52%	-27%	23%



JOBS LOSS MESSAGE TEST

“Next, do you strongly agree, somewhat agree, somewhat disagree or strongly disagree with the following statement?

Eliminating DACA would be bad for our country because nearly 700,000 people who are currently in this country and working in all aspects of society will suddenly lose their status and their jobs, and be eligible for immediate deportation.” (Q6)



Party ID	Agree	Disagree	Net agree	No opinion
Republicans	51%	39%	+12%	10%
Democrats	81%	11%	+70%	7%
Inds./others	61%	23%	+38%	16%





MOORE INFORMATION GROUP

RESEARCH • ANALYSIS • RESULTS

www.MOOREINFORMATIONGROUP.COM

503.221.3100

PORTLAND, OR

MISSOULA, MT

DENVER, CO

WASHINGTON, DC

